

OR 35 Overpass at U.S. 26 (Mt. Hood Highway)

Bridge Deck Repair Project



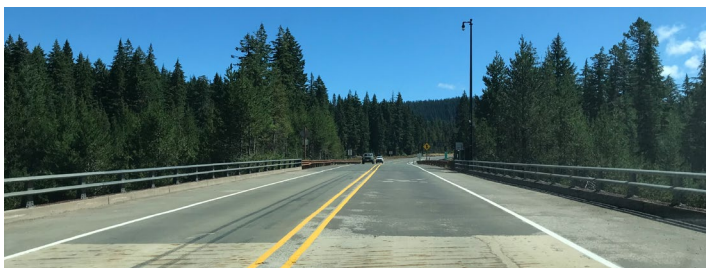
Construction To Improve the Bridge Deck on the OR 35 Overpass at U.S. 26 Begins in Summer 2024

Project Overview

We will soon begin work to resurface the bridge deck on the Oregon Highway 35 overpass at U.S. 26 (Mt. Hood Highway) interchange in Mt. Hood, east of Government Camp. Making these repairs now increases the service life and provides a smoother, safer ride for travelers. The project removes the deteriorated concrete and repaves the bridge. Other work includes replacing the existing bridge railings to meet current standards, replacing the bridge joints, repaving and applying new striping to the repaired bridge surface. Construction will continue through spring of 2025. The project schedule is subject to change.

Why Is This Work Needed?

The concrete deck of the existing bridge structure is showing signs of damage and in need of repair. The bridge is located in a heavy snow zone and has received extensive winter maintenance treatments for 45 years. Over time, snow removal equipment in this area contributes to the deteriorating bridge deck, damaged bridge joints and rutted travel lanes.



Current conditions of the damaged bridge deck surface on the OR 35 overpass at U.S. 26.



Aerial photo of project area, looking west.

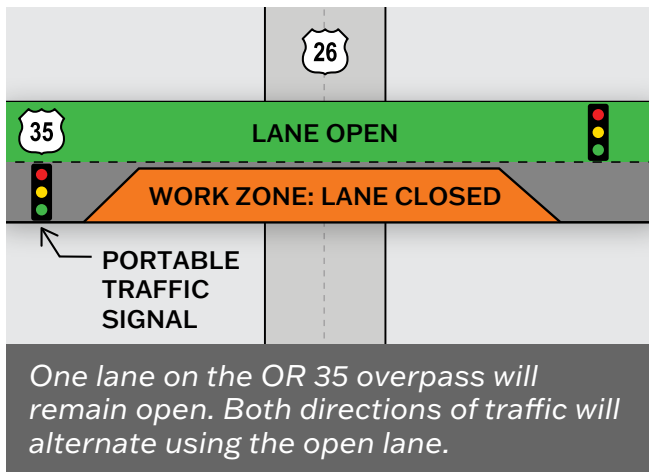
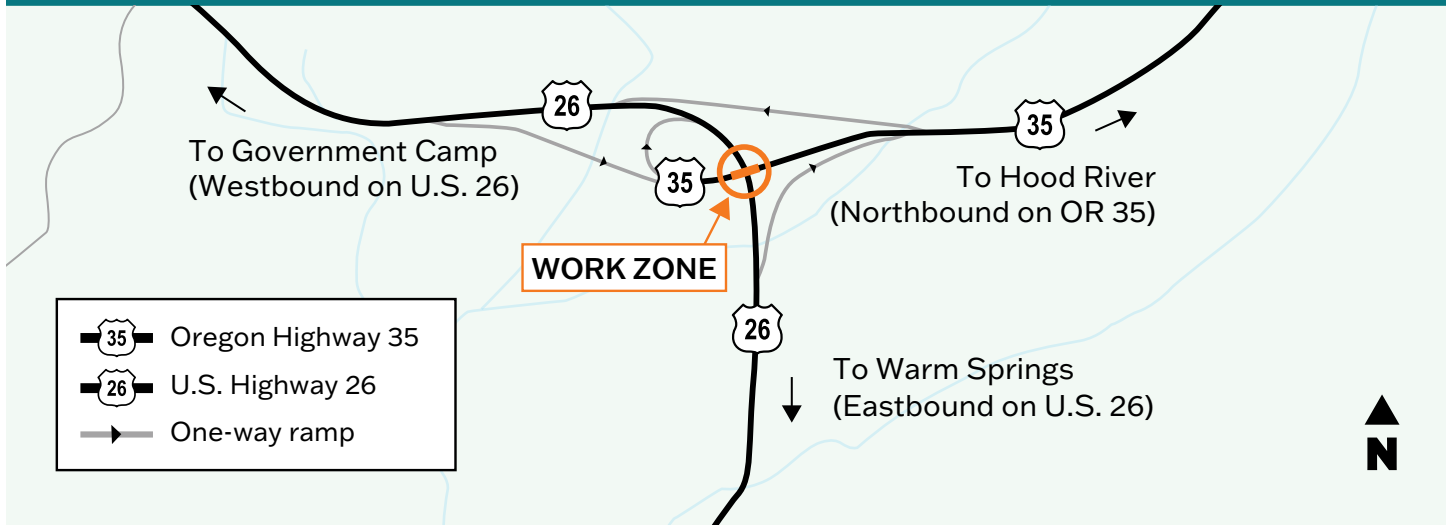
What To Expect During Construction

- **No full closures of OR 35 or U.S. 26** are expected.
- **Alternating 24/7 single lane closures** on the OR 35 bridge during repairs.
- **Work will occur on one half of the bridge at a time.** A single travel lane will remain open during construction.
- A **portable traffic signal** will be set up during construction on OR 35 near each end of the bridge to allow one lane, two-way traffic through the work zone.
- **Flaggers will direct traffic** on OR 35 near the work zone during set up and removal of the portable traffic signals and during paving operations.
- **Expect nightly single lane closures on U.S. 26** with flaggers directing traffic between 4 p.m. and 11 a.m. during set up and removal of the temporary work access and the containment area under the OR 35 bridge structure.
- **An enclosed containment area will be set up** under the OR 35 bridge structure to capture materials and any debris, for traffic to safely travel under the work zone on U.S. 26.
- **Bicyclists and pedestrians will use the existing shoulders** on the bridge deck for access through the work zone.

More details about construction, traffic impacts and work hours will be provided on the project website during construction.

OR 35 Overpass at U.S. 26 (Mt. Hood Highway)

Bridge Deck Repair Project



Illustrations are not to scale. For informational purposes only.

Tips for Traveling Safely in Work Zones

- △ **Orange is your cue!** Pay attention when you see orange signs, barrels, cones and barricades.
- △ **Obey all speed signs** for your safety and the safety of others.
- △ **Expect delays**—plan for them—and leave early so you can drive safely through the work zone.
- △ **Allow extra time when traveling** and follow all signs and flaggers for safety.

For the most up-to-date traffic impacts please visit www.TripCheck.com

Questions or Comments?

Contact Dee Hidalgo
ODOT Community Affairs
Dee.hidalgo@odot.oregon.gov
971-352-5719

For ADA (Americans with Disabilities Act) or Civil Rights Title VI accommodations, translation/interpretation services, or more information call 503-731-4128, TTY 800-735-2900 or Oregon Relay Service 7-1-1.

¿Habla usted español? Podemos proveer la información en esta publicación en español. Para recibir la información en español, por favor llámé al (503)731-4128.

Learn more by visiting the project website: www.tinyurl.com/OR35atUS26